



Silvelox Secur /Securplus Technical and Fitting Details

Secur Sizing

Standard Projection

Width

Let = External Frame W—Overall Door & Frame Width

Lit = Door Opening

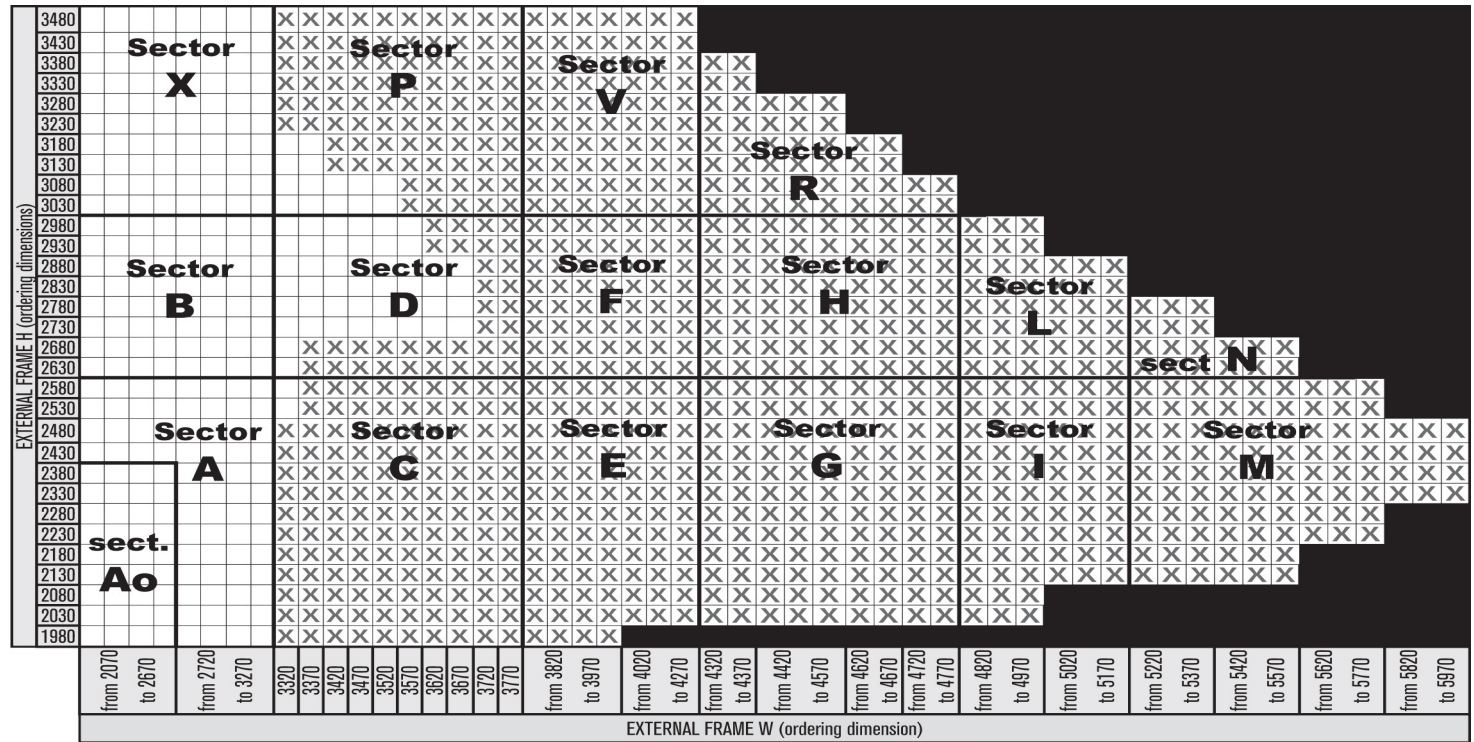
Lnp = Drive through width Lit-50mm

Height

Het = External Frame W—Overall Door & Frame Height

Hnp = Drive th


Hnp = Drive through height



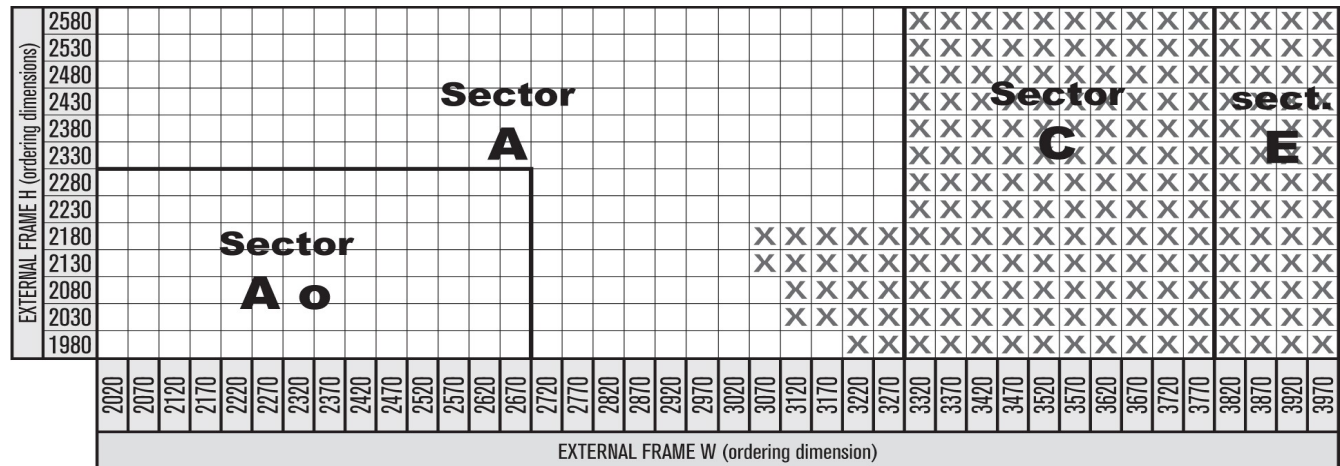
N.B. Dimensions vary with a path of 50mm (ex. 2070, 2120, 2170, 2220, 2270, 2320...)

Size Limit for Standard Pedestrian Door

NB: if with pedestrian door, COMBIMATIC motorization is mandatory

 Doors with frame uprights W 135 mm (instead of 110 mm)

Non-Protruding



Securplus Sizing

Standard Projection

Width

Let = External Frame W—Overall Door & Frame Width

Lit = Door Opening

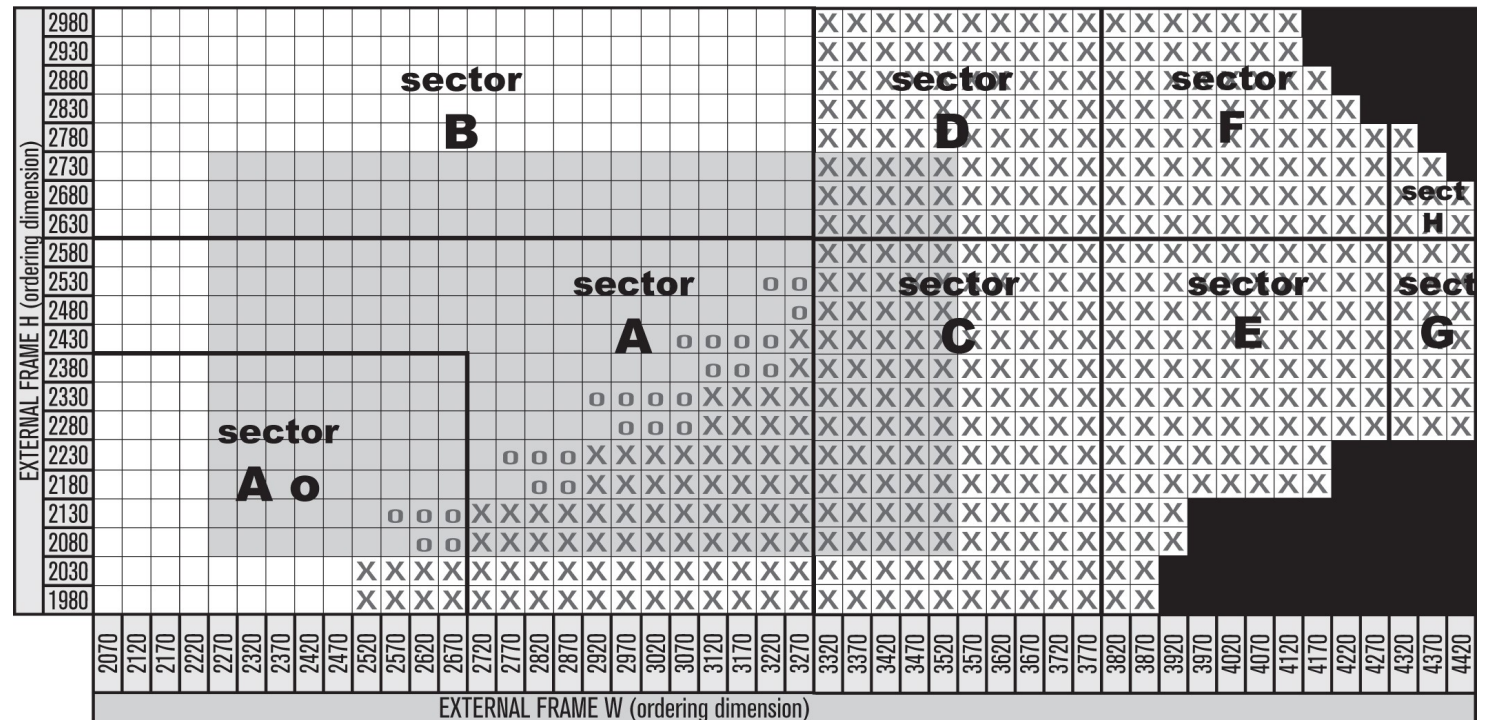
Lnp = Drive through width Lit-50mm

Height

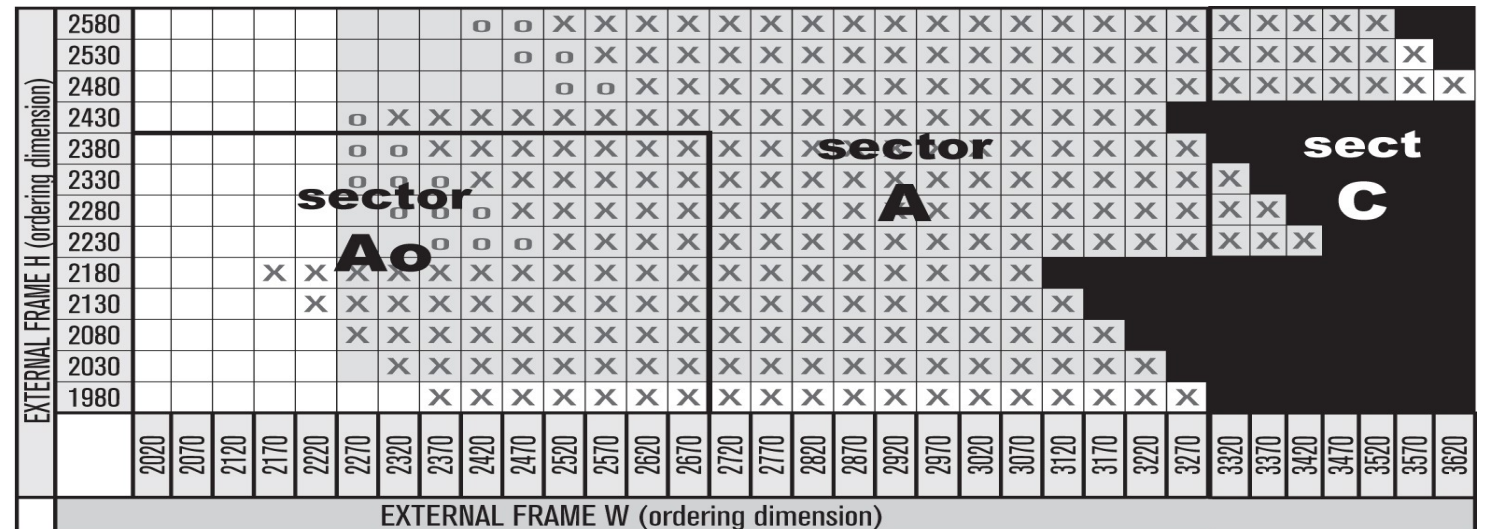
Het = External Frame W—Overall Door & Frame Height

Hnp = Drive through height

		Maximum Door Size with Central Pedestrian Door Combimatic Motor mandatory with pedestrian door
X	X	Doors with uprights W135 mm (instead of 110 mm)
○	○	Doors with uprights W135 mm only if with pedestrian door



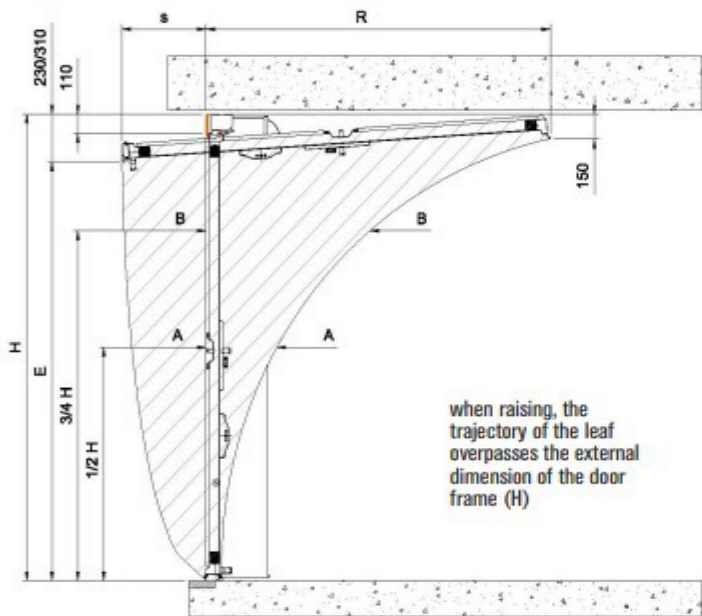
Non-Protruding



* L >= 3620 available only for models VIP-FOR-GEO-ARA-ZEN-FLAT-LAYER

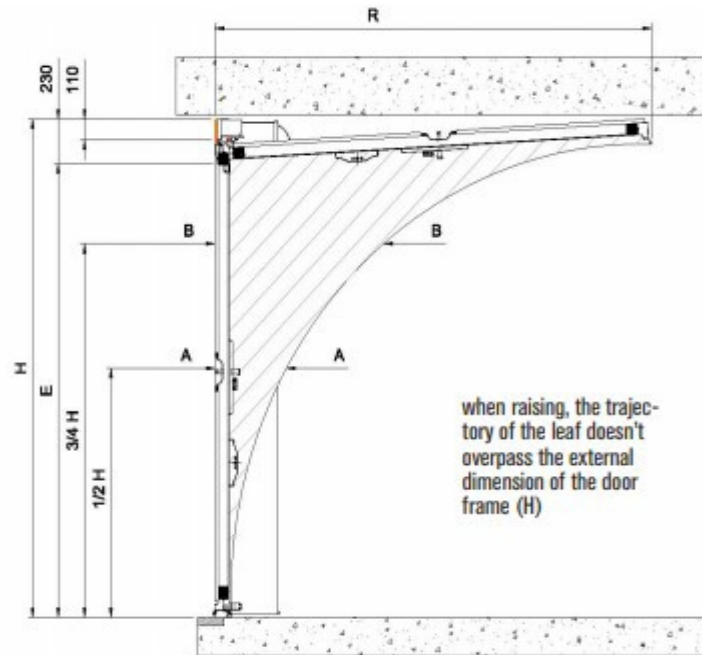
Trajectory of a Secur & Securplus—Std Projection vs Non Protruding

Standard Projection



H	A-A 1/2 H	B-B 3/4 H	S	R	E		
1980	400	990	900	1480	190	1700	1750
2030	400	1015	900	1520	190	1750	1800
2080	400	1040	900	1560	240	1750	1840
2130	400	1065	900	1600	240	1800	1890
2180	400	1090	900	1640	290	1800	1935
2230	400	1115	900	1670	290	1850	1985
2280	400	1140	900	1710	340	1850	2030
2330	400	1165	900	1750	340	1900	2080
2380	400	1190	900	1790	390	1900	2125
2430	400	1215	900	1820	390	1950	2175
2480	400	1240	900	1860	440	1950	2220
2530	400	1265	900	1900	440	2000	2270
2580	400	1290	900	1940	490	2000	2315
2630	400	1315	900	1970	490	2050	2365
2680	400	1340	900	2010	540	2050	2410
2730	400	1365	900	2050	540	2100	2460
2780	400	1390	950	2090	590	2100	2505
2830	400	1415	950	2120	590	2150	2555
2880	400	1440	950	2160	640	2150	2600
2930	400	1465	950	2200	640	2200	2650
2980	400	1490	950	2230	690	2200	2695
3030	400	1515	950	2270	690	2250	2745
3080	400	1540	950	2310	740	2250	2790
3130	400	1565	1000	2350	740	2300	2840
3180	400	1590	1000	2380	790	2300	2885
3230	400	1615	1000	2420	790	2350	2935
3280	400	1640	1000	2460	840	2350	2980
3330	400	1665	1000	2500	840	2400	3030
3380	400	1690	1000	2530	890	2400	3075
3430	400	1715	1000	2570	890	2450	3125
3480	400	1740	1000	2610	940	2450	3170

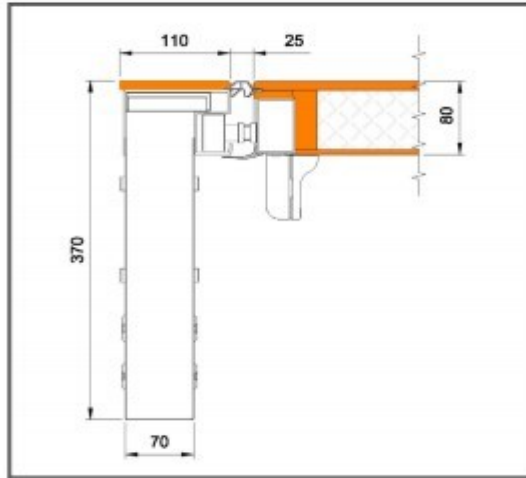
Non-Protruding



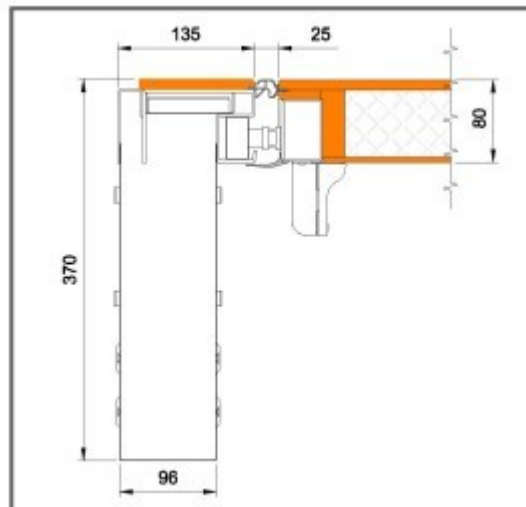
H	A-A 1/2 H	B-B 3/4 H	R	E		
1980	520	990	980	1480	1900	1750
2030	530	1015	1005	1520	1950	1800
2080	540	1040	1030	1560	2000	1850
2130	550	1065	1055	1600	2050	1900
2180	560	1090	1080	1640	2100	1950
2230	570	1115	1105	1670	2150	2000
2280	580	1140	1130	1710	2200	2050
2330	590	1165	1155	1750	2250	2100
2380	600	1190	1180	1790	2300	2150
2430	610	1215	1205	1820	2350	2200
2480	620	1240	1230	1860	2400	2250
2530	630	1265	1255	1900	2450	2300
2580	640	1290	1280	1940	2500	2350
2630	650	1315	1305	1980	2550	2400

Door Detail Installation and Technical Guide—Secur & Securplus

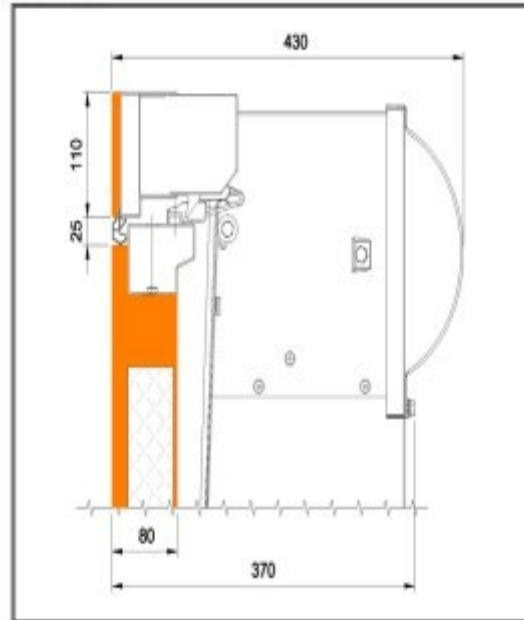
Frame Detail—110mm



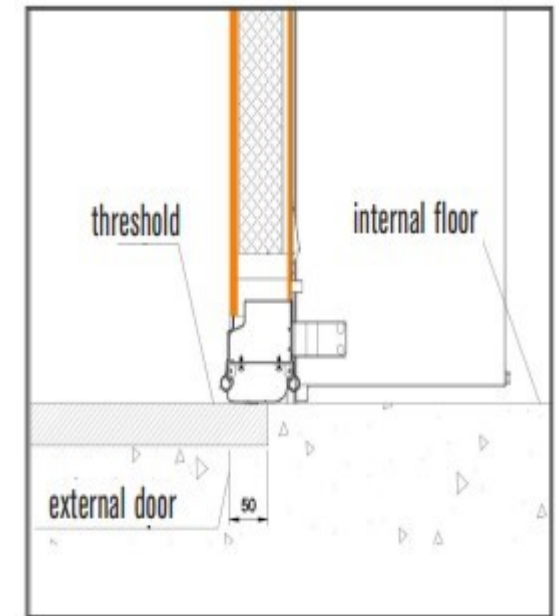
Frame Detail—135mm
see 'X' in sizing



Head Detail

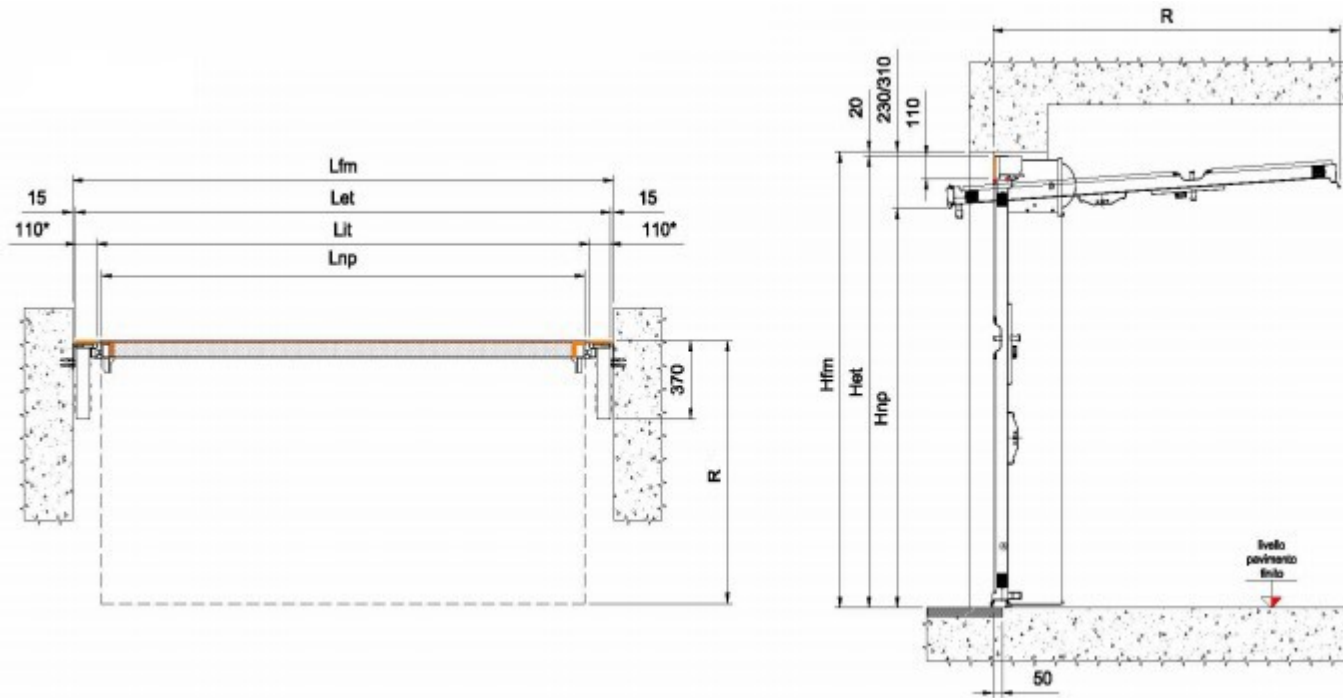


Floor Seal



The doors have either 110mm or 135mm face to the frame and a weight box 70mm or 96mm respectively which extends into the opening 370mm. In addition the counterweight pulley cover extends back another 60mm but only at the top of the door (see Head detail). The head is 110mm tall and there is 25mm of EPDM Rubber between the head and the door. This serves as a seal and finger trap protection. The Rubber seal contacts the ground 50mm behind the front face of the door.

Installation Between the Opening and Under the lintel—dimensions and fixings



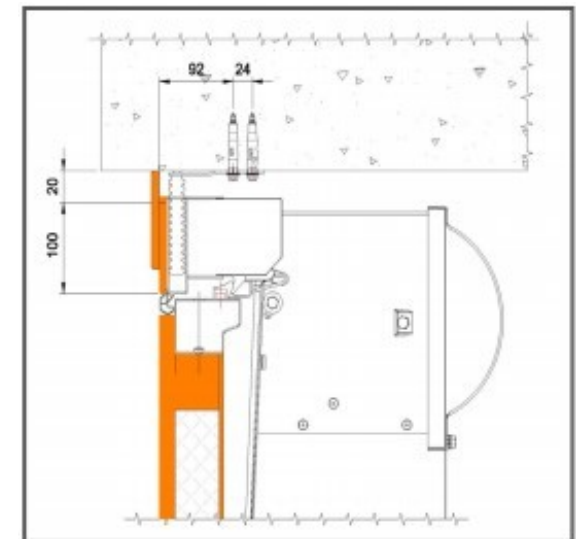
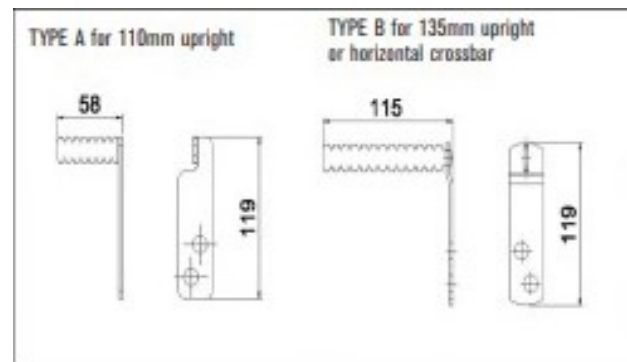
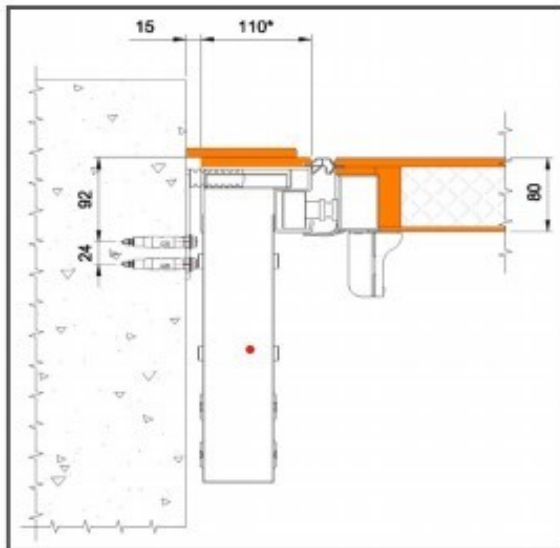
Widths

Lfm = Brickwork Opening
 Let = Overall Door & Frame Width < Lfm—30mm
 Lit = Door Opening = Let—220mm or 270mm*
 Lnp = Drive through width Lit—50mm

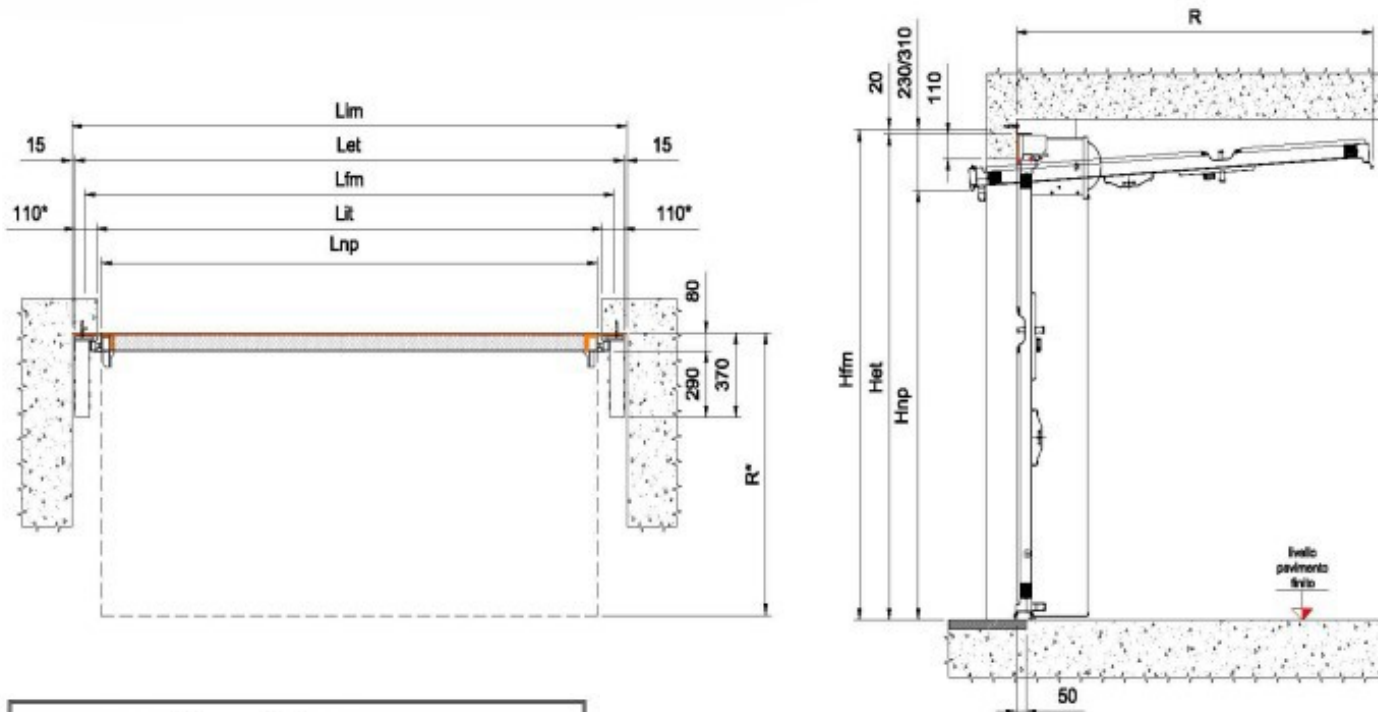
R = Protrusion into garage (see P4)

Heights

Hfm = Minimum Structural Height
 Het = Overall Door & Frame Height(max) < Hfm—20mm
 Hnp = Drive through height Het—See P4 (230-310mm)
 Door size = Het—110mm



Installation Behind the Opening and Behind the lintel—dimensions and fixings



Widths

Let = Overall Door & Frame Width
 Lfm = Space between inside walls > Let + 30mm
 Lit = Door Size = Let - 220mm / 270mm*
 Minimum Brickwork Opening = Lit
 Lnp = Drive through width = Lit - 50mm

R = Protrusion into garage (see P4)

Heights

Hfm = Minimum Structural Height > Het + 20mm
 Het = Overall Door & Frame Height
 Him = Floor to ceiling > Het + 20mm
 Hnp = Drive through height Het - 230-310mm (See P4)
 Door size = Het - 110mm = Minimum Lintel Height

